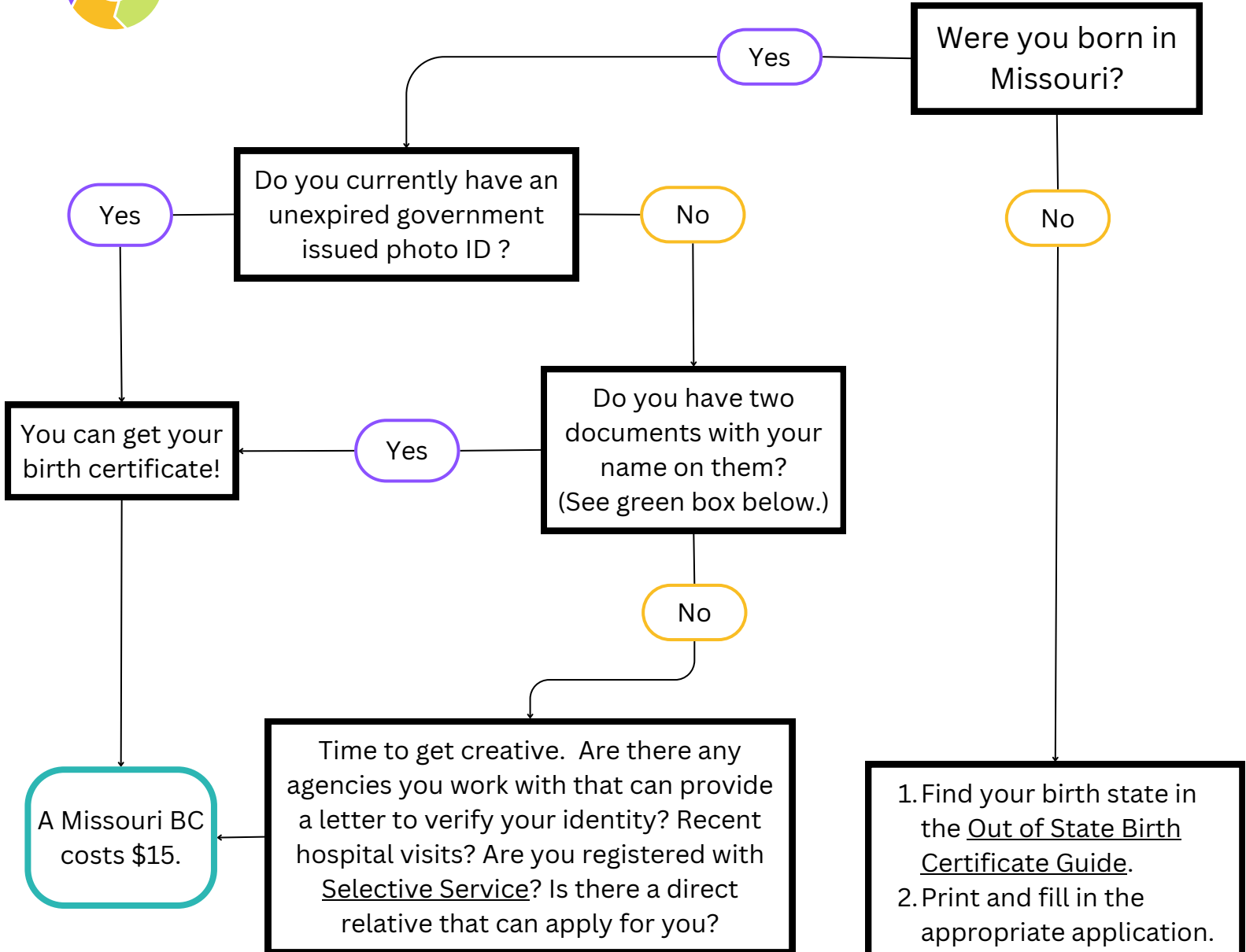




Birth Certificate Process



Potential Acceptable Documents* for Missouri Birth Certificate

*Varies by office location. Call your office to confirm.

- Letter from Social Service Agency on letterhead
- Food Stamp or Social Security award letter
- Utility Bill
- Hospital bill or discharge paperwork
- Social Security Card

1. Find your birth state in the [Out of State Birth Certificate Guide](#).
2. Print and fill in the appropriate application.
3. Submit photocopies of required documents.*
4. Sign the birth certificate application.
5. Submit the application with the exact fee.**

*If you do not have the required documents, call the Vital Records office. Sometimes you can have a social worker or attorney apply on your behalf.

**The cheapest option is to mail in the application, but if funds allow, applying online is faster!